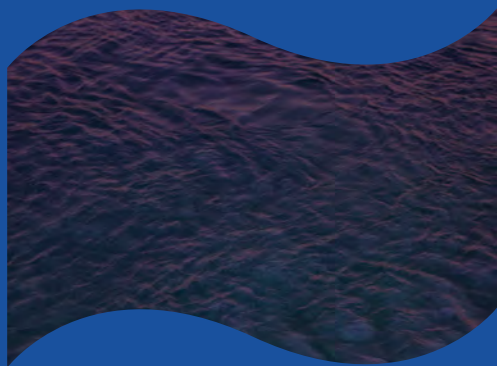


≈ FREMANTLE BIENNALE A FESTIVAL OF SITE-RESPONSIVE CONTEMPORARY ART.

CROSSING
21

5-21
NOVEMBER



The Fremantle Biennale is a festival of site-responsive contemporary art taking place from 5-21 November 2021.

Our largely free program presents artworks by artists from across Australia in a festival that reveals and celebrates the cultural, social and historical distinctiveness of the Fremantle (Walyalup) region.

The Fremantle Biennale is held every two years in the Nyoongar season of Kambarang (November).

The third edition of the Fremantle Biennale, with the title CROSSING 21, will trace the shores of the Derbarl Yerrigan (Swan River) from Walyalup (Fremantle) to Dyoondalup (Point Walter) and through to the Derbarl Nara (Coogee Beach), with a focus of activity between the two iconic Fremantle traffic bridges.

This is a place of alchemy where histories intersect and collide, where the bilya (river) meets the wardan (sea) in a place of confluence.

Inspiring the theme for CROSSING 21 is a seminal event that took place over one hundred years ago. At the mouth of the river a sandstone tidal land bridge once existed, which served as a natural crossing, used by the Whadjuk people for safe passage, ritual and ceremonial practices. This rocky bar was blasted away by Chief Engineer C Y O'Connor to make way for the ever-growing Swan River colony in 1892. This event disrupted the harmonious balance and tidal rhythm between ocean, river and people that had existed for millennia.

Responding to this history, CROSSING 21 includes 20 site-responsive artworks by First Nation, West Australian and Australian artists, spanning large-scale installations, dance, contemporary music, live performance, visual art and architecture.



A lasting legacy to the cultural and social impact left by the Fremantle Biennale, the *Bilya Bidi* book is an illustrated monograph that speaks to the theme of CROSSING 21. Contextualising Walyalup's (Fremantle's) deep history and the subsequent layering of colonial and contemporary narratives, the book will hold a collection of essays, reflections, poems and correspondences, illustrated by the works of contemporary artists, writers, community leaders and Whadjuk Noongar Traditional Owners. Order your copy now from our website.



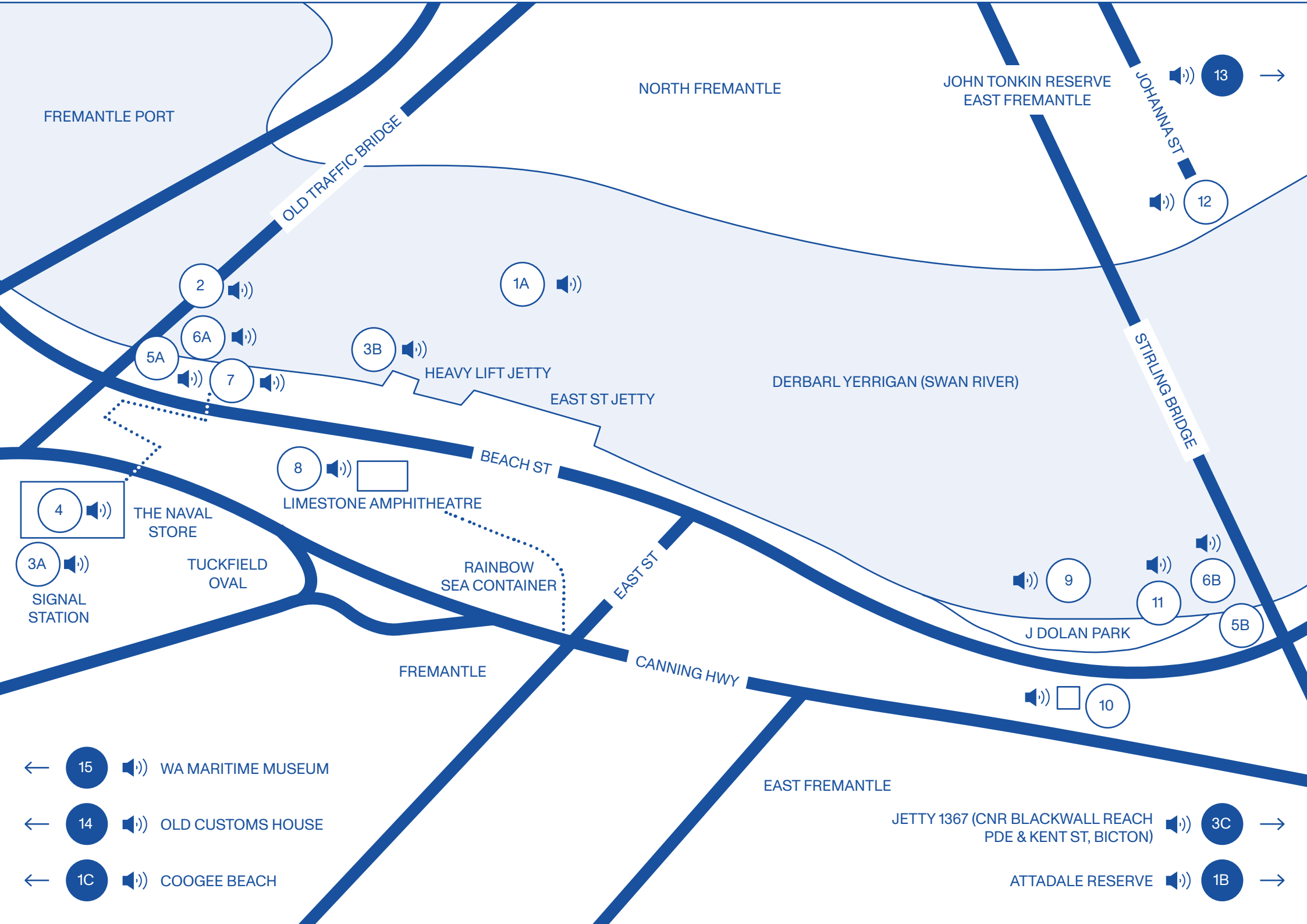
FOR FURTHER INFORMATION ON ALL EVENTS PLEASE REFER TO WWW.FREMANTLEBIENNALE.COM.AU		FRI	SAT	SUN	MON	TUE	WED	THU	FRI	SAT	SUN	MON	TUE	WED	THU	FRI	SAT	SUN
		5	6	7	8	9	10	11	12	13	14	15	16	17	18	19	20	21
1A/1B/1C	MOOMBAKI	8PM FREMANTLE							8PM ATTADALE							8PM COOGEE		
2	THESE WORDS WILL REMAIN	24/7																
3A/3B/3C	THE COMMONWEALTH OF NEW BAYSWATER																	
3A	DOWNTOWN	THURS-FRI 5-10PM SAT-SUN 2-10PM						THURS-FRI 5-10PM SAT-SUN 2-10PM							THURS-FRI 5-10PM SAT-SUN 2-10PM			
3B	EMBASSY	THURS-FRI 5-10PM SAT-SUN 2-10PM						THURS-FRI 5-10PM SAT-SUN 2-10PM							THURS-FRI 5-10PM SAT-SUN 2-10PM			
3C	THE INVERTED MUSEUM OF HISTORY	10-6PM						10-6PM							10-6PM			
4	OUTSIDE IN	10-4PM	PERFORMANCES 4-6PM					10-4PM							10-4PM	PERFORMANCES 4-6PM		
4	STEP CHANGE	10AM-4PM						10AM-4PM							10AM-4PM			
4	MILLENNIAL REAPER	10AM-4PM						FACTORY OPEN 11-12 NOV, 3-6PM			PUBLIC BROOMCRAFT SESSION 13-14 NOV, 3-6PM				10AM-4PM			
4	FERVOR CROSSOVERS							7PM										
4	MEETING PLACE															7.30PM		
5A/5B	ORANGE PATH	24/7																
6A/6B	BULLHORN															6PM		
7	TIGHTNESS TIMES TOUGHNESS	10AM-6PM						10AM-6PM							10AM-6PM			
7	A BLESSED CURSE							6PM										
8	GATHERING PLACE	24/7																
9	OVERLOAD	24/7																
10	TRANSITIONS	10AM-6PM						10AM-6PM							10AM-6PM			
11	UNCOUNTABLE														5.30PM & 7PM			
12	SUNRISE SUNSET	5.30AM & 6PM							5.30AM & 6PM							5.30AM & 6PM		
13	VESPERS								6PM									
14	KEPA KALYAKOORL – AQUIFEROUS	10AM-6PM						10AM-6PM							10AM-6PM			
15	ULTRAMARINE CLOSING PARTY																5PM-LATE	
15	CONVERSATIONS CREATIVE CONCILIATIONS								10AM-1PM									



AUDIO TOUR

A self-guided audio tour and walk, *Bilya Bidi*, will accompany the Fremantle Biennale program. *Bilya Bidi* explores the histories of the bilya (river), acknowledging ancient stories and disruptions and weaving together interviews, reflections and new works from Whadjuk Noongar Traditional Owners, historians and community members, as well as the Fremantle Biennale artists.

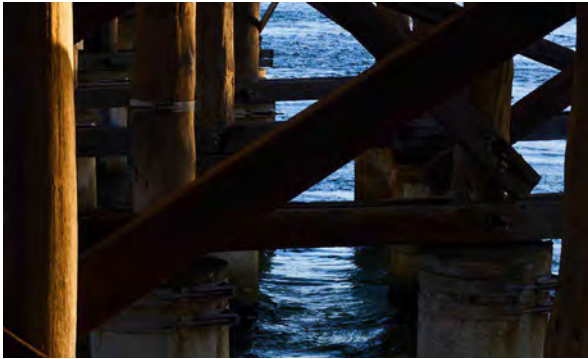
Access the audio tour via your mobile device with the QR code or via www.fremantlebiennale.com.au





MOOMBAKI
Ilona McGuire

1A
1B
1C



THESE WORDS
WILL REMAIN
Jazz Money

2



THE COMMONWEALTH
OF NEW BAYSWATER
Jessee Lee Johns
Rohin Kickett
Jacob Diamond

3A
3B
3C



OUTSIDE IN
Amrita Hepi

4



STEP CHANGE
Alexander Boynes
Mandy Martin
Tristen Parr

4



MILLENNIAL REAPER
Loren Kronemyer

4



FERVOR
CROSSOVERS
Paul Iskov
Dale Tilbrook

4

Derbarl Yerrigan
(Swan River),
between
the bridges,
Fremantle
5-7 November
Fri-Sun-8pm
FREE

Dyoondalup
(Attadale
Reserve),
Attadale
12-14 Nov
Fri-Sun-8pm
FREE

Derbarl Nara
(Coogee Beach),
Coogee
19-20 Nov
Fri-Sat-8pm
FREE

Fremantle Traffic Bridge,
Fremantle

5-21 Nov
24/7
FREE

5-21 Nov
Downtown
Thurs-Fri,
5-10pm
Sat-Sun
2-10pm

Public Works &
Embassy
Thurs-Fri,
5-10pm
Sat-Sun
2-10pm

The Inverted
Museum of
History
Thurs-Sun
10am-6pm
FREE

The Naval Store,
Fremantle

5-21 Nov
Thurs-Sun
10am-4pm

Performances
Fri 5 Nov 4-6pm
Sat 6 Nov 4-6pm
Sun 7 Nov 4-6pm
Thurs 18 Nov 4-6pm
Fri 19 Nov 4-6pm
Sat 20 Nov 4-6pm
FREE

The Naval Store,
Fremantle

5-21 Nov
Thurs-Sun
10am-4pm
FREE

The Naval Store,
Fremantle

5-21 Nov
Thurs-Sun
10am-4pm

Factory Open
Thurs-Fri, 11-12 Nov
3-6pm
FREE

Broomcraft Sessions
Sat-Sun, 13-14 Nov
3-6pm
\$20 + booking fee

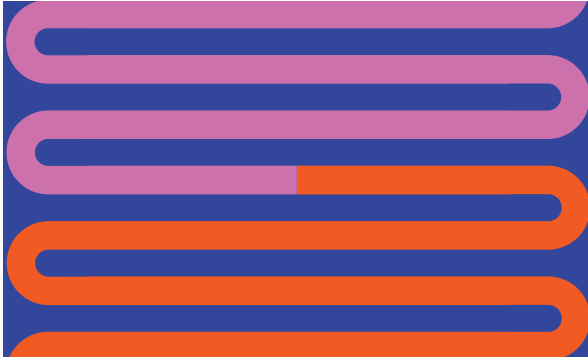
The Naval Store,
Fremantle

Dinners
Thurs 11 Nov 7pm
Fri 12 Nov 7pm
Sat 13 Nov 7pm
Sun 14 Nov 7pm
\$250 + booking fee



MEETING PLACE
HIP Company

4



ORANGE PATH
AC4CA

5A
5B



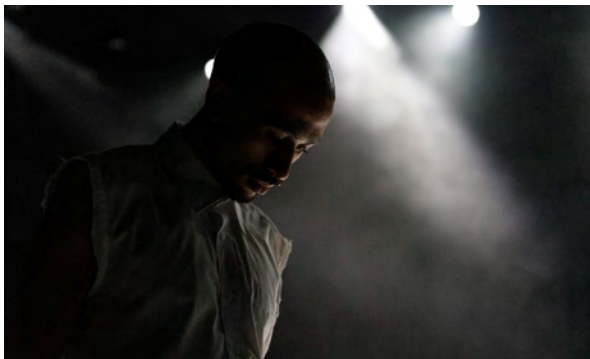
BULLHORN
Callum G'Froerer
Clint Bracknell
Trevor Ryan

6A
6B



TIGHTNESS TIMES
TOUGHNESS
Bruno Booth

7



A BLESSED CURSE
Maitland Schnaars
Brooke Leeder
Azariah Felton

7



GATHERING PLACE
Sandra Harben
Penhale & Winter

8



OVERLOAD
Andrew Sunley Smith

9

The Naval Store,
Fremantle

Performances
Fri 19 Nov 7.30pm
\$45 + booking fee

Beach Street, Fremantle
and Riverside Road,
East Fremantle

5-21 Nov
24/7
FREE

Beneath the Fremantle
Traffic Bridge, Fremantle

Performances
Fri 19 Nov 6pm
Sat 20 Nov 6pm
FREE

North Worral Park,
Fremantle

5-21 Nov
Thurs-Sun
10am-6pm
FREE

Limestone Amphitheatre,
123 Beach Street,
Fremantle

Performances
Thurs 11 Nov 6pm
Fri 12 Nov 6pm
Sat 13 Nov 6pm
\$40 + booking fee

Limestone Amphitheatre,
123 Beach Street, Fremantle

5-21 Nov
24/7
FREE

Derbarl Yerrigan
(Swan River),
J Dolan Park, East
Fremantle

5-21 Nov
Thurs-Sun
10am-6pm
FREE



TRANSITIONS
Nathan John
Thompson

10



UNCOUNTABLE
May Greenberg
Zee Zunnur

11



SUNRISE SUNSET
Katie West

12



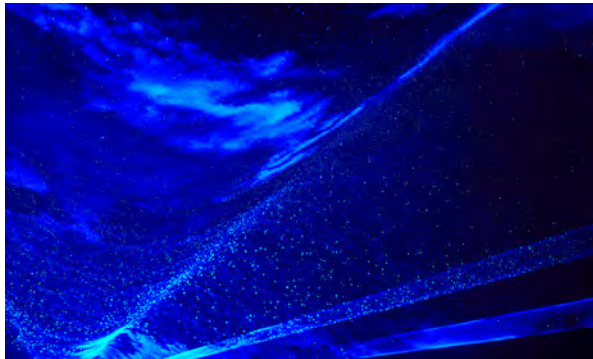
VESPERS
Rachael Dease
Tim Collins

13



KEPA KALYAKOORL –
AQUIFEROUS
Cara Teusner-Gartland
Daniel Jan Martin
Sandra Harben

14



ULTRAMARINE
CLOSING PARTY
MOVE &
LEISURE STATE

15



CONVERSATIONS
CREATIVE
CONCILIATIONS

15

Plympton Pumthouse,
Riverside Road,
East Fremantle

5-21 Nov
Thurs-Sun
10am-6pm
FREE

Stirling Bridge, Fremantle

Performances
Thurs 18 Nov, 5.30pm & 7pm
Fri 19 Nov, 5.30pm & 7pm
Sat 20 Nov, 5.30pm & 7pm
FREE

North shore of
the Derbarl Yerrigan
(Swan River), Johannah
Street, North Fremantle
5-21 Nov

Performances
Fri 5 Nov 5.30am and 6pm
Fri 12 Nov 5.30am and 6pm
Fri 19 Nov 5.30am and 6pm
FREE

John Tonkin Reserve,
East Fremantle

Performances
12 Nov 6pm
13 Nov 6pm
14 Nov 6pm
FREE

Old Customs House and
various sites along the
Derbarl Yerrigan

5-21 Nov
Thurs-Sun
10am-6pm
FREE

WA Maritime Museum

Sun 21 Nov
5pm-late
\$20 + booking fee
Booking Essential!

Maritime Museum Theatre

13-14 Nov
Sat-Sun
10am-1pm
\$10 + booking fee

REDISCOVER WALYALUP WITH THE FREMANTLE BIENNALE. FOR MORE INFORMATION AND TO BOOK TICKETS VISIT FREMANTLEBIENNALE.COM.AU

The Fremantle Biennale takes place on the unceded lands and waters of the Whadjuk people of the Nyoongar nation. We acknowledge the Whadjuk people as the traditional owners of the greater Walyalup (Fremantle) area. We acknowledge elders past, present and emerging, and respect the living culture and heritage of all Aboriginal and Torres Strait Islander peoples.

FOUNDING PARTNER



PRINCIPAL PARTNERS



PRESENTING PARTNERS

